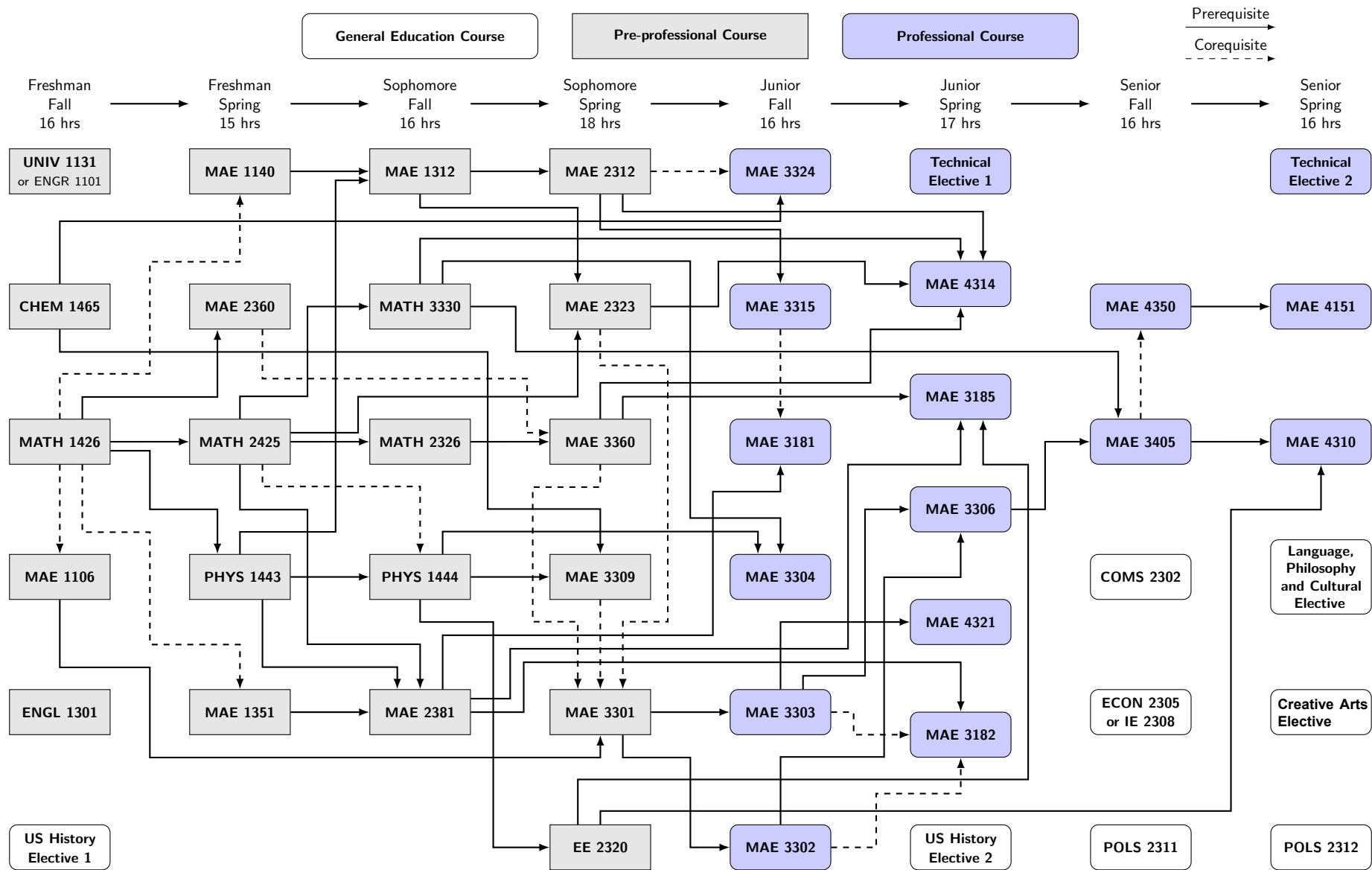


# 2025-2026 Aerospace Engineering Curriculum Flow Chart



Notes: 1. All students must abide by the academic regulations of the University and the College of Engineering. 2. To be in good academic standing within the MAE department, each student must be in compliance with all academic regulations of UTA and COE. In the preprofessional program, each student must maintain a minimum 3-GPA calculation of 2.5 and have a total of no more than four unsuccessful attempts at engineering courses. Further, in the professional program, each student must maintain a minimum UTA cumulative GPA of 2.0 and a minimum major GPA of 2.0. 3. No professional course may be taken unless the student is admitted into the professional program. Professional courses may be taken to fill out a schedule in the semester that the last pre-professional course is taken. 4. Courses may not be offered every semester. Students are urged to plan their course sequence schedules carefully to avoid delaying their graduation.