



Center for Research on Teaching and Learning Excellence  
OFFICE OF THE PROVOST

---

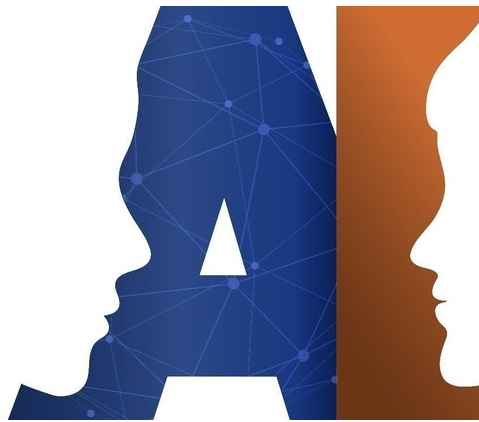
*Imagining, Creating, Innovating the Future*

---

## CRTLE NEWSLETTER

NEWS 97, December 6, 2024

---



### Join us for Pondering AI Community Event

*Presented by University Analytics, OIT, CRTLE and the Library*

**Thursday, December 12**

**11:30 am - 2:15 pm**

**Trinity Hall, Room 104 or via Microsoft Teams**

You will hear from psychologist and human-AI interaction researcher Dr. Marisa Tschopp about the blurred line between human and machine and then participate in smaller faculty and staff group discussions on AI at UTA.

Lunch, beverages, and light snacks will be served. Please RSVP by **Dec. 10**.

**For more information about this event and other AI events at UTA, please join the [AI Community on Teams](#).**

Register for this AI Community Session



**ACUE**

Student Success  
Through Exceptional  
Teaching

# Focus on Teaching Excellence

## Enroll in ACUE Stackable Courses

Course enrollment for spring is open. Earn the ACUE Effective Teaching credential by taking the four online micro-courses that can be completed according to your schedule. *ACUE at UTA is sponsored by the UT System.*

***Sign up for ACUE now!***

**Starting January 27:**

**Creating an Inclusive and Supportive Online Learning Environment**

CRTLE Website with ACUE Micro-credential Course List and Registration Link

*Want more information? Join this ACUE information session:*

**Wednesday, December 11th at 4:00 pm**

[Register for the UT System ACUE Information Session Here](#)

*Do you have more questions about ACUE or have trouble enrolling? Email us directly:*

**Ann Cavallo** [cavallo@uta.edu](mailto:cavallo@uta.edu) or **Nakesha Brown** [nakesha.brown@uta.edu](mailto:nakesha.brown@uta.edu)



## CRTLE CONNECT!

### Open Teaching Consultation Hours

Grab some time with us for an appointment to discuss anything you would like to discuss about teaching! Great teaching ideas and innovations, successes, challenges, struggles, advice - all conversations are welcome. We are here to listen, support, and offer guidance on teaching.

**Schedule in half-hour increments or for more time if you would like.**

**Mondays 10:00 am - 12:00 pm**

**Tuesdays 2:00 pm - 4:00 pm**

**Trinity Hall, Room 105 or via Microsoft Teams**

Schedule a CRTLE Connect Consultation

# upcoming CRTLE EVENTS

Coming This Spring!

- **Unpacking the UTA Syllabus Session.** Wednesday, January 22, 11:30 am - 1:00 pm, Trinity Hall 105 or via Microsoft Teams. *Lunch provided for in-person attendees.*
- **Faculty/Community Partner Service Learning Networking Event.** Thursday, January 23, 4:00 pm - 6:30 pm, Trinity Hall 104.
- **Creating Psychologically Safe Learning Environments Session.** Wednesday, February 5, 12:00 pm - 1:00 pm, Trinity Hall 105. *Lunch provided for in-person attendees.*

**Visit the CRTLE Website for Updates on Events and  
Access to Our Many Teaching Resources:**  
**[www.uta.edu/crtle](http://www.uta.edu/crtle)**

## UTA Partners Supporting Teaching Excellence

Join sessions and trainings offered by our UTA partners or contact them for further assistance. We work together to support teaching!

Center for Distance Education (CDE):  
<https://www.uta.edu/distance>

Office of Information Technology (OIT):  
<https://oit.uta.edu/>

OIT Classroom Support Services:  
<https://www.uta.edu/edutech/>

---

## Learn and Achieve Together

---

### OFFICE OF THE PROVOST - CENTER FOR RESEARCH ON TEACHING AND LEARNING EXCELLENCE

ANN M.L. CAVALLO, PH.D., ASSISTANT VICE PROVOST AND DIRECTOR

ANDREW M. CLARK, PH.D., ASSOCIATE DIRECTOR AND QEP DIRECTOR

SUSAN DEQUEANT, M.ED., ASSOCIATE DIRECTOR, CENTER FOR SERVICE LEARNING

BETH FLEENER, PH.D., SENIOR TEACHING INNOVATION RESEARCH ASSOCIATE

NAKESHA BROWN, M.ED., PROGRAM COORDINATOR

[CRTLE@uta.edu](mailto:CRTLE@uta.edu) // 817-272-7464 // <https://www.uta.edu/crtle>

*If you have difficulty accessing the content in this announcement, please report accessibility issues to the Center for Research on Teaching and Learning Excellence [CRTLE@uta.edu](mailto:CRTLE@uta.edu) or (817) 272-7464*